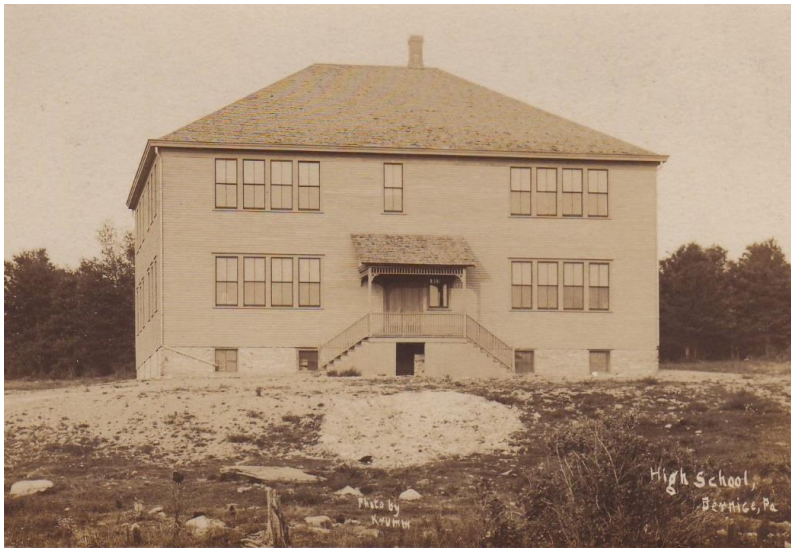


July 21, 2021

TOURING SULLIVAN COUNTY'S MUSEUM . . .
while dusting



The Sullivan County Historical Society has obtained copies of official records for the Application for Subsidy For Closed Schools for 1968-1969. Although all the schools fall under the Class 3 designation for the Sullivan County School District, they are listed by areas within the district. The final consolidation for Sullivan County School came in 1969 with the

culmination of the completion of the elementary school (High School had been in affect since 1964).

Over time, but not all at one time, there were 95 schools in Sullivan County. The listing only shows 83. The Turnpike and Sonestown schools would have remained open at that time in 1969. We have listed the schools with the actual year of their closing.

Albert E, 1939; Bachman, 1926; Barth, 1939; Bella Sylva, 1918; Black Creek, 1931; Black Water Run, 1916; Bridge View, 1912; Campbellsville, 1924; Centennial, 1927; Center, 1948; Cherry Grove, 1927; Cherry Mills, 1939; Chessock, 1930; Colley, 1940; Colley Twp., 1949; Colley Twp., 1959; Church, 1943; Donahue, 1919; Dushore Public, 1953, East Fox, 1941; Elk Lick, 1928; Emmans, 1912; Forksville Borough, 1914; Fox Twp., 1941; Fulmer, 1931; Genoga, 1918; Glidewell, 1927; Green Mountain, 1920; Eagles Mere Borough, 1931; Eagles Mere Borough, 1963; Dunker Hill, 1927; Mt. Lewis, 1943; Rock Run, 1919; Sonesville, 1920; Victor, 1943; Tannery, 1926; Thomas Run, 1914; West, 1943; West Hill, 1919; Wheelerville, 1948; Woodside, 1911; Ringer Hill, 1939; Russian, 1932; Ryan, 1939; Satterfield, 1935; Sciota Vale, 1914; Shady Nook, 1912; Shrimp, 1961; Sheets, 1912; South Hill – Fox, 1921; South Street – Fox, 1942; Sugar Grove, 1918; Sugar Hill, 1929; Sugar Point, 1926, Sugar Ridge, 1941; Lower Fox, 1941; Mountain, 1919; Millview, 1916; Muncy Valley, 1927; Murray, 1926; New Union, 1928; Nordmont, 1941; North Fox, 1914; Overt, 1917; O’Boyle, 1926; Pleasant Valley, 1945; Quinn, 1919; Ricketts, 1916; Ringdale 1923; Harrington, 1939, Hemlock, 1927, Hillsgrove Twp. – primary, 1920; Hillsgrove Twp., 1929; Holmes, 1939; Hollacher, 1920; Jamison, 1925; Kelley, 1927, King – Laporte Twp., 1927; Lake Run, 1921; Laporte Borough, 1929; Lemmer, 1932; Lincoln Falls, 1931.

Many of these schools listed were closed because of depopulation of an area or by joining with a neighboring school. Ten schools are not on the list but could have been in existence before recorded history. Also, some schools were simply incorporated into a church and would therefore not necessarily appear on this listing because the church had not closed.

To anyone reading this: if you have photos or historic information about any of the schools, could you please share what you have for the archival records? Location of the schools would also be appreciated, though we do have many of them already. History on any subject can only be as good as the facts that are given to a museum’s archive and we are striving to let future generations be able to know that history.

To contact the museum, you can call 570-946-5020 or email museum@scpahistory.com or stop in on a Thursday, Friday or Saturday from 1 to 5 p.m. or by happenchance if you see the ‘open’ sign in the window.

Photo: The photo is of Bernice School which burned in March of 1906 when the school building was barely five years old. Students were afterwards sent to the Odd Fellows and Knights of Labor halls.