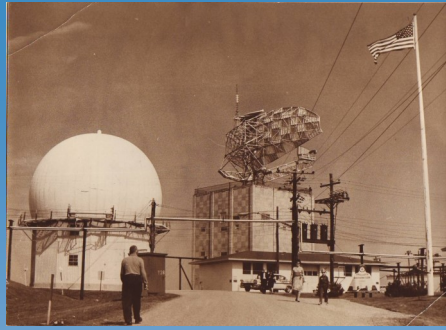


**11. Lopez**



The Benton Air Force Station was a Cold War radar facility built in 1950 within Ricketts Glen State Park. When it closed in 1975 it was converted to the Red Rock Job Corps Center, and still operates in that capacity today. While the property is not open to the general public, there is a green street sign at the entrance at Rt. 487.

*What is the name on the sign? (Rt. 487, Lopez 41°21'35.3"N 76°17'55.0"W)*

**12. Mildred**



Shepherd of the Hills Trinity Chapel in Mildred was one of 3 Evangelical Lutheran churches in Sullivan County. Today the church is gone and in its place is a small gazebo overlooking the cemetery. The church bell sits in front of the gazebo.

*What is the date on the stone in front of the bell? (Rt. 487, Mildred)*

**Fill in your answers in the spaces provided below.**

1. \_\_\_\_\_
2. \_\_\_\_\_
3. \_\_\_\_\_
4. \_\_\_\_\_
5. \_\_\_\_\_
6. \_\_\_\_\_
7. \_\_\_\_\_
8. \_\_\_\_\_
9. \_\_\_\_\_
10. \_\_\_\_\_
11. \_\_\_\_\_
12. \_\_\_\_\_

Tell us, Where did you travel from to do the History Quest?

Name: \_\_\_\_\_

Address: \_\_\_\_\_

\_\_\_\_\_

*Learn more about the natural and historic heritage of Sullivan County, PA and receive a commemorative token!*



**It's simple:**

- Visit 10 of the 12 sites listed
- Answer the question for each site you visit on the form provided

**Return the form to either:**

**The Sullivan County Historical Society Museum**  
570-946-5020

In person:  
458 Meylert St, Laporte PA 18626

-or-

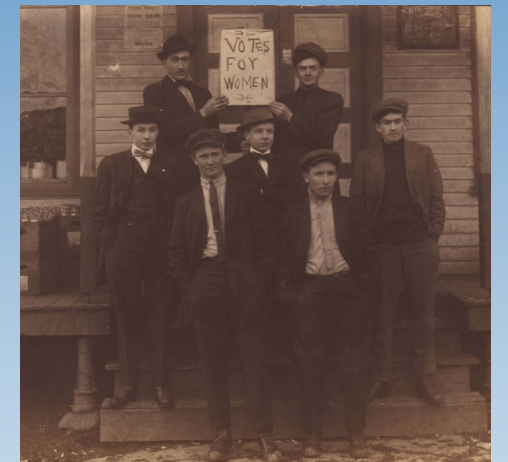
By Mail Year Round:  
P.O. Box 252, Laporte PA 18626

**The Sullivan County Conservation District**  
(Mon – Fri, 8:30 – 4:30 year round):  
9219 Rte 487 Suite B, Dushore PA 18614

*Funded by*  
The Sullivan County Room Tax & Endless Mtns. Visitors Bureau

**Sullivan County PA**

**History Quest 2020**



**100th Anniversary of Women's Right to Vote (Hillsgrove before 1920)**

*Presented by*  
**The Sullivan County Historical Society and Museum**  
&  
**The Sullivan County Conservation District**

### 1. Dushore



The building in downtown Dushore that today houses the Sullivan Review was built in 1907. It was not always a newspaper office; in its long history it also served as a firehouse, barber shop and library.

*What feature still remains on the Water Street side of the building from its days as a library? (211 Water Street, Dushore)*

### 2. Estella



The Loyalsock Joint High School was the second high school in Estella and the first to occupy the building that now houses Darway Nursing Home. On the front lawn an old school bell reminds passers-by of the building's original purpose.

*Where did the bell come from, and what organization was instrumental in placing it there? (5865 Rt. 154, Estella)*

### 3. Forksville



The Forksville General Store occupies a building constructed in 1851 by Sadler Rogers, just a year after he finished the nearby covered bridge. Today, inside the general store there is a life-sized picture of another of Forksville's favorite sons.

*What is his name? 22 Bridge St, Forksville*

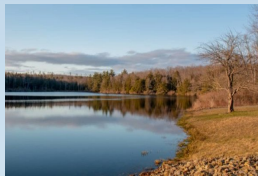
### 4. Davidson Township



Hunter's Lake in Davidson Twp is today a favorite spot for boating and fishing. But in 1901 its waters powered the electric plant that brought electricity to Eagles Mere. The dam originally built to harness the lake's power has been replaced.

*From what material is the present dam constructed? (Brunnerdale Rd west of Rt. 42)*

### 5. Forks Township



Hidden away on the northern side of the Loyalsock Creek, Sones Pond was created by the CCC in the 1930s while they were building the state forest roads. It is a favorite spot for fishing, but it also welcomes picnickers.

*How many tables are available in the picnic area? (Forks Twp off Loyalsock Rd.)*

### 6. Laporte



The Sullivan County Veterans Memorial in front of the courthouse in Laporte is a fairly new addition to the grounds, but the county has a long history of remembering local veterans who served to protect our freedom.

*How many branches of the military are represented on the back of the memorial? (Corner of Main St. and Muncy St., Laporte)*

### 7. Elkland Township



The first Quaker Meeting in Sullivan County was held in a private home in Eldredsville in 1804. The Elkland Friends Meeting House is the third meeting house built by the Friends Community, and still holds services during the summer months.

*How many windows and doors does the meeting house have? (Rt. 154 between Estella and Shunk.)*

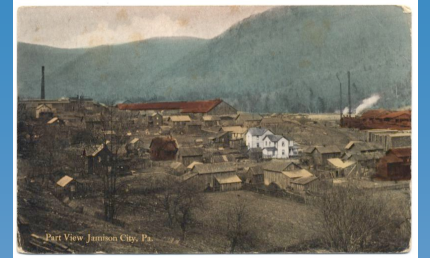
### 8. Colley Township



Bellasyva Cemetery is located in Colley Township and has graves dating back to 1830. The older grave stones memorialize only the deceased, but a few of the newer stones also remember the deceased's pets.

*What are the names of the dogs that appear on one of the grave stones? (4376 Dutch Mountain Rd., Colley Twp.)*

### 9. Jamison City



Located on the border of Sullivan and Columbia Counties, Jamison City was a booming town in 1900, when the logging and tanning industries were flourishing. Today only a few buildings remain to remind us of those by-gone days.

*How tall was the brick tannery smokestack that is still visible today? (Historic Sign - Jamison City Rd., T720 and SR 4049)*

### 10. Historical Society Museum



January 17, 2020 marked the 100<sup>th</sup> anniversary of the beginning of prohibition. Prior to 1920, alcohol production and sales supported many thriving businesses throughout the county. The Sullivan County Historical Society Museum has in its collection a bottle from a prominent Mildred distillery.

*What is written on this bottle? (458 Meylert St, Laporte)*