

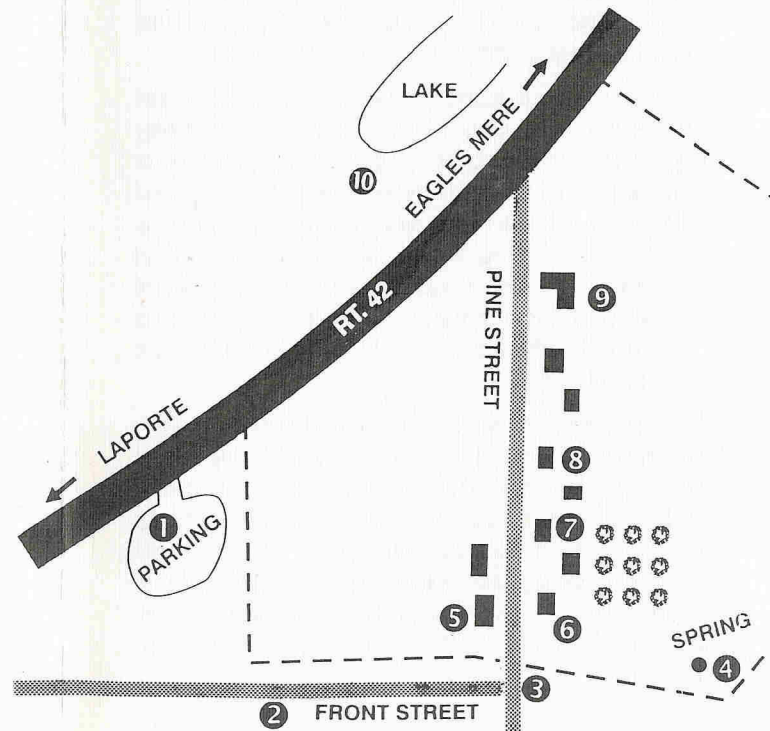
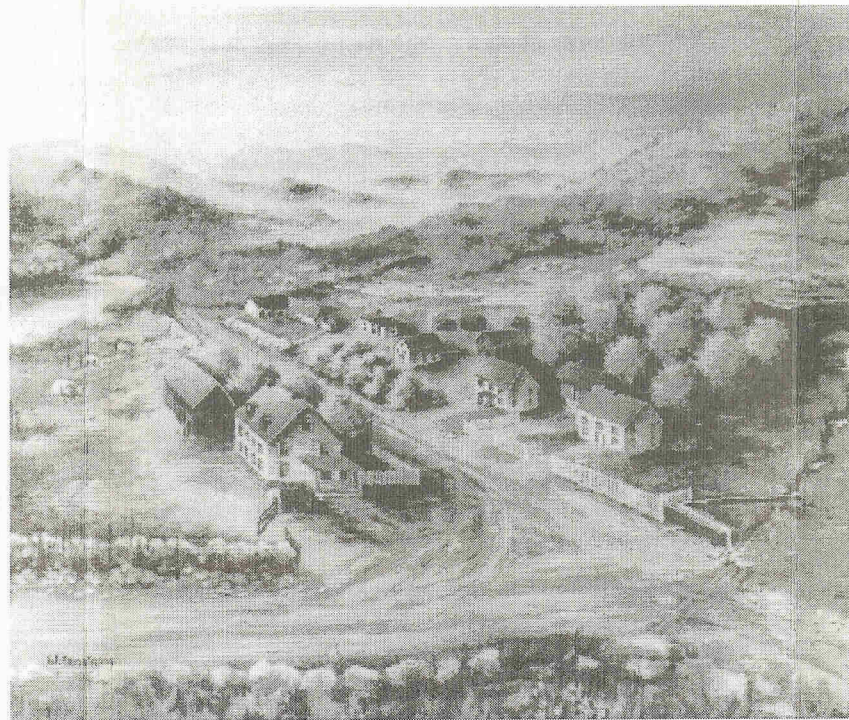
## WALKING TOUR GUIDE

1. Park in the designated area (#1). Walk north to Front Street (#2) and turn left (west). This was State Route 42 until shortly after the Second World War when the present road was constructed and paved.

2. Proceed along Front Street to the intersection with Pine Street (#3). From here you can see all of the site of Celestia. Left on Pine Street takes you through the village to the paved road. Right on Pine Street leads you through private land to marked trails bringing you to the Loyalsock Creek via Shanerburg Run or Pole Bridge Run.

3. Up the hill directly west of the intersection are the remains of Celestia's main spring and reservoir (#4). The watering trough pictured was fed by the outflow from this spring, which is still flowing.

4. Proceed left on Pine Street. On your immediate left is the foundation of Peter Armstrong's house (#5). This building was completed by 1860. It contained offices, a store run by Hannah Armstrong and a printing press on the first floor and a large auditorium on the second floor for community meetings and religious services. Living quarters were among and above these spaces. There was a barn southeast of this house with a small pond behind it. Traces of both are still visible.



5. Across Pine Street from the Armstrong family house were boarding houses and outbuildings used by other members of the community. Behind them was the apple orchard of which no trees remain (#6,7,8).

6. Further down Pine Street, near a large maple tree on the right, is the foundation hole of the large L shaped barn (#9). This was the center of the community's farming work. The lands behind the town were used for grazing both cattle and sheep.

7. After crossing the present paved highway, Pine Street goes past Celestial Lake (#10). Now privately owned, this lake was created by

damming the headwaters of Pole Bridge Run. It provided food for Celestia, powered a mill just below the dam, and was the location of a brickworks. It may be viewed from Route 42.

8. When you reach the intersection of Pine Street and Route 42, you may return to your car by walking east along the pavement or by returning through the village.

Enjoy Your Visit